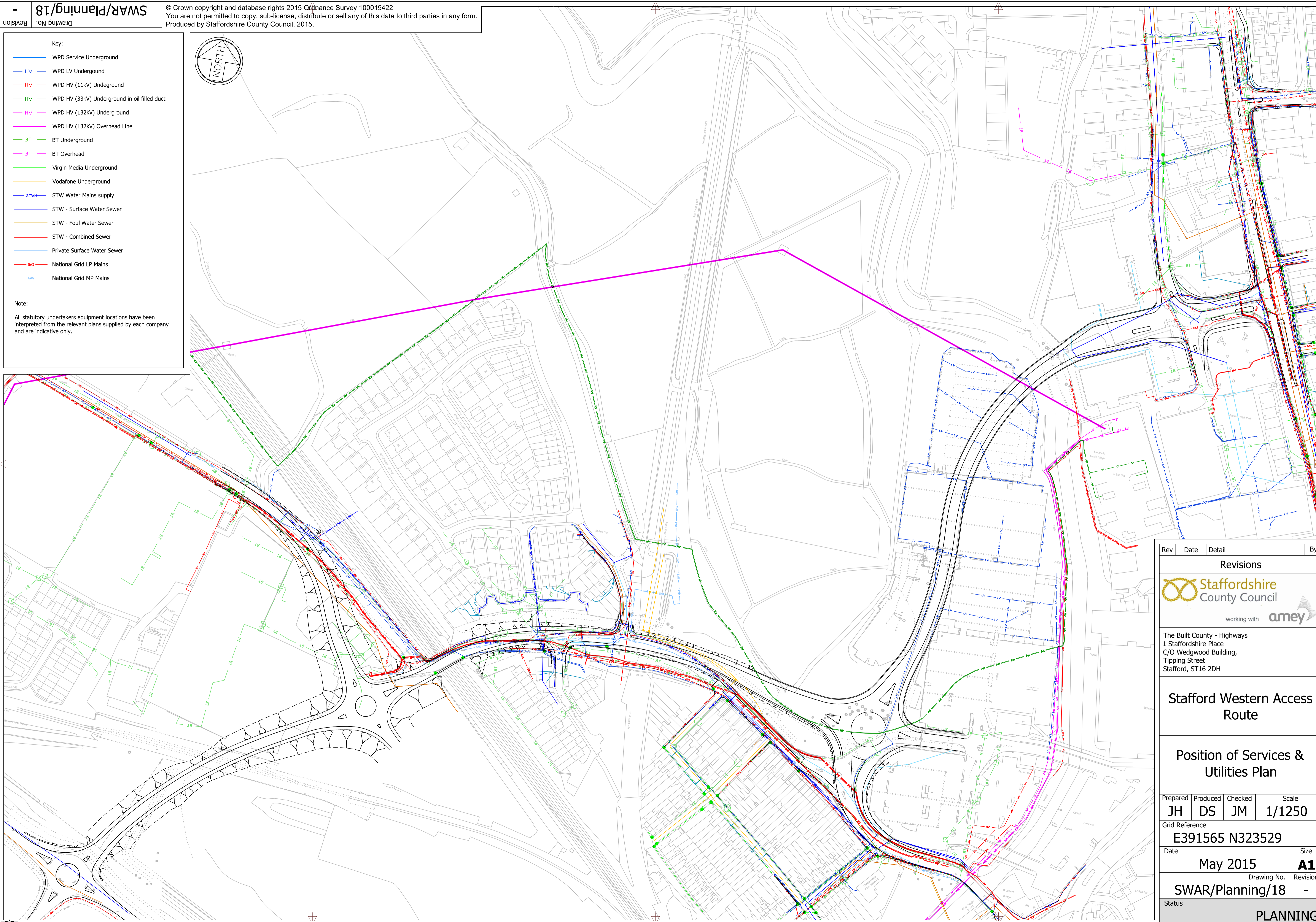
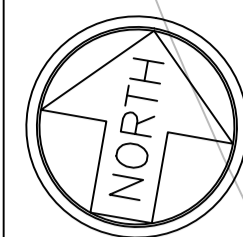


Key:

- WPD Service Underground
- LV WPD LV Underground
- HV WPD HV (11kV) Underground
- HV WPD HV (33kV) Underground in oil filled duct
- HV WPD HV (132kV) Underground
- WPD HV (132kV) Overhead Line
- BT BT Underground
- BT BT Overhead
- Virgin Media Underground
- Vodafone Underground
- STW Water Mains supply
- STW - Surface Water Sewer
- STW - Foul Water Sewer
- STW - Combined Sewer
- Private Surface Water Sewer
- GAS National Grid LP Mains
- GAS National Grid MP Mains

Note:

All statutory undertakers equipment locations have been interpreted from the relevant plans supplied by each company and are indicative only.



Rev	Date	Detail	By
-----	------	--------	----

Revisions



The Built County - Highways
 1 Staffordshire Place
 C/O Wedgwood Building,
 Tipping Street
 Stafford, ST16 2DH

Stafford Western Access Route

Position of Services & Utilities Plan

Prepared	Produced	Checked	Scale
JH	DS	JM	1/1250

Grid Reference
E391565 N323529

Date	Size
May 2015	A1

Drawing No.
SWAR/Planning/18

Status
PLANNING